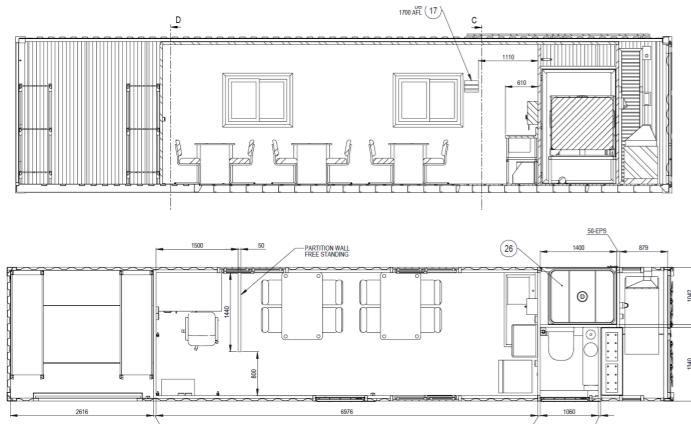


New Royal Wolf Product 40' Site Hub



About

Site Hub is a 40' High Cube Container designed to provide site facilities where there are no or limited access to services such as power and water.

Site Hub is fitted with a diesel generator, can be connected to mains power via 2 x 15a power inlets, 1000ltr potable water tank, a pump out toilet, grey water storage, kitchenette, and a separate storage bay.

The Site Hub is equipped with solar panels and batteries that power the lights, water pump and 12v fridge. This 12v system allows the fridge to run continuously without the need of mains power or generator, thus running silent and allowing ongoing storage food and drinks.

Product benefits

- > Brand new 2021 build container
- > Amenities for staff including hot and cold running water, water boiler (Birko), large fridge/freezer that **runs even if power is not connected** [Site hub has solar panels and a large battery bank]
- > 3.4kW's of air conditioning
- > Data points that enable [Site Hub can be used as an office]
- > USB charging points
- > **Generous storage area** including 2 bays of shelving (8 shelves total)
- > Large **lunchroom suitable for 14 staff**
- > **Doesn't need a power connection**
- > **Doesn't need a sewer connection**
- > Self contained toilet
- > 1000 ltrs of **drinking quality water** on board
- > **Easy to use** – land it where you want it, use it, its that simple
- > Built like a brick dunny

Ideal customers

- > Road Construction
- > New building sites - First on site breaking ground with no power or sewer
- > Sites or situations where power and sewer connections are difficult

Operation

Site hub is **deployable in 5 minutes** and **up & running in 30 seconds**

Site Hub has **2 power systems**

1. A huge 12v system that runs the fridge, lights and water pump
2. A **240v system (same as a house)**, this system runs the Air con, hot water system and the Birko (hot water boiler)

The power system is rock solid and **uses the latest and best technology on the market.**

The fridge, water pump, lights and USB points work even if the generator isn't running!

Flick the switch on the genny and you have ice cold or toasty warm air con, hot water on tap and can make a cuppa by pulling the lever on the stainless steel Birko

Product features

- > 8kVA **diesel generator**
- > 12v electrical system (Lights, Fridge, water pump & USB points)
- > 240v electrical system (AC, HWS and hot water boiler)
- > **Data points reticulated from service bay** into office area
- > Stainless Steel Kitchenette
- > 95Ltr **grey water storage tank**
- > 1000Ltr potable water tank
- > 12v pressure pump (Water supply)
- > 3L hot water boiler (For drinks)
- > Hot water system (For washing)
- > 190Ltr fridge freezer
- > 12v lighting throughout
- > 6 USB charging points and **device shelf**
- > **14 pax lunchroom or 12 pax plus office area**
- > Storeroom with 2 shelving bays
- > **Pump out toilet with flush water tank** and hand wash basin
- > **Lock boxes** on end and PA doors
- > **3 sliding glass windows** with **flyscreens** and **security bars**
- > 3.4kW **reverse cycle Mitsubishi split system** air conditioning system

Compliances

- > Steel structures - AS4100
- > Containers considered for transportation - AS3711.4 (freight containers)
- > Bolts AS/NZ 1252, AS4100
- > Welding - AS1554.1
- > Weld symbols - AS1101.3
- > Joint penetration butt welds - AS1554.1, U.N.O
- > Electrical - AS/NZS 3000, AS/NZS 3001
- > Barriersin - AS/NZS 3000

Steel grades

- > Plate = 250mpa AS3678
- > Hot rolled sections and bar = 300mpa AS3679.1
- > Hollow sections = C350MPA, AS1163

Solar operates

- > Fridge
- > Lights
- > USB ports
- > Water pump