

REFRIGERATED  
CONTAINERS

# COLD STORAGE SOLUTION





**WHATEVER YOUR PROJECT  
DEMANDS, WHENEVER IT  
DEMANDS IT, UNITED RENTALS  
IS PROUD TO BE YOUR PARTNER.**



## REFRIGERATED CONTAINERS COLD STORAGE SOLUTION

Refrigerated containers, are specialised shipping containers designed for the transport and storage of temperature-sensitive goods. Utilising advanced Carrier refrigeration technology, they maintain precise temperature control to preserve the freshness and safety of perishable items such as food, pharmaceuticals, and more.

- > Control the cold**  
Ultimate cold storage solution
- > Designed to fit**  
Customisable and convenient
- > Flexible efficiency**  
Low power consumption
- > Emergency exit**  
Safety for customers



## CONTROL THE COLD

Experience exceptional temperature control with our portable, hygienic, and secure cold storage units. Each unit is thermostatically controlled, meticulously maintained, and equipped with plastic curtains, making them perfect for storing food, beverages, and various other items.



## DESIGNED TO FIT

Our refrigerated containers come with insulated walls, a durable metal interior, drain holes, flat and T bar flooring which makes our cold storage a flexible and effective solution that can also be modified to fit your requirements.



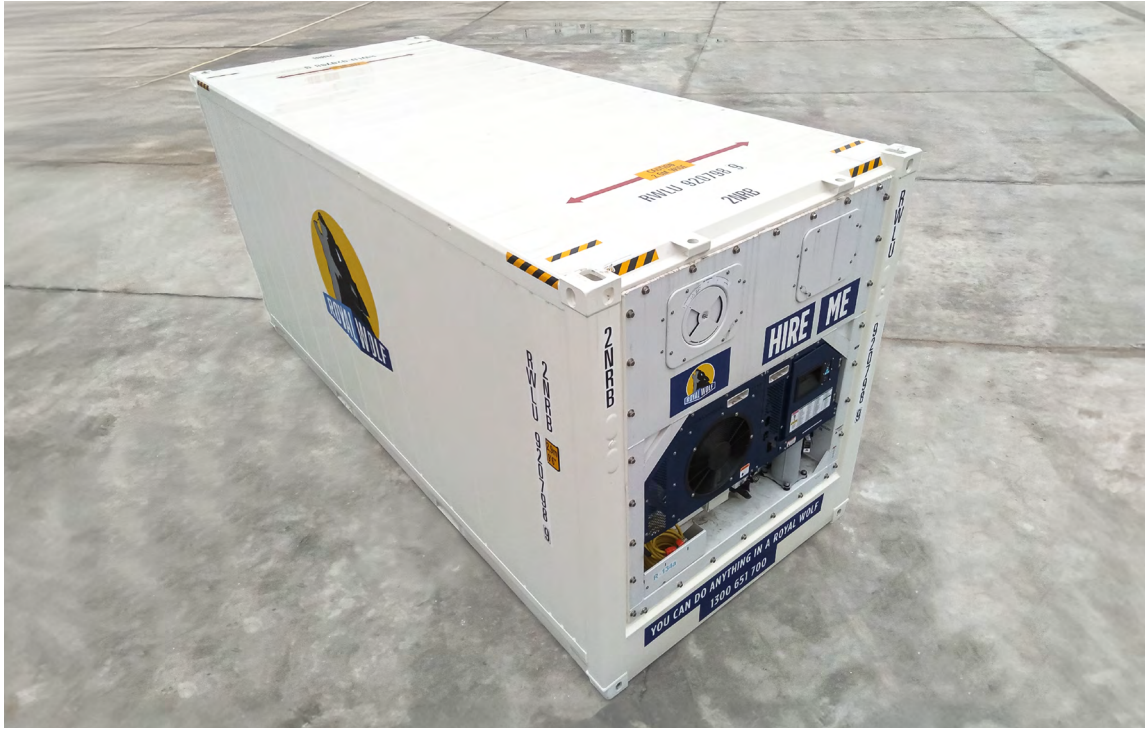
## FLEXIBLE EFFICIENCY

Ideal for temporary storage of stock during sales periods, relocations, renovations or for events and festivals. Designed for efficient operation, single-phase units require 15Amps / 240Volt and three-phase units require 32Amps / 415Volt with a 15m 4 pin power cord.



## EMERGENCY EXIT

Our premium range refrigerated containers are equipped with internal alarm, bell mechanisms, external alarm light and an emergency exit hatch for quick and safe exit. Be sure to consult with our team on your container.



## ROYAL WOLF CATERS TO YOU

Check out some of our extras: Alarms, digital displays and EZI ENTA doors (Single Door) replaces standard doors with a simple door opening mechanism with a single handle.

### SIZES & DIMENSIONS

	Length (m)		Width (m)		Height (m)		Door Opening (m)		Internal Cubic Capacity (m <sup>3</sup> )	Max Gross Weight (kg)	Tare Weight Incl. Unit (kg)	Max Payload (kg)
	Internal	External	Internal	External	Internal	External	Width	Height				
<b>10ft HC**</b>	2.28	2.99	2.29	2.44	2.59	2.90	1.79	2.46	13.5	10,160	2,450	7,710
<b>20ft HC** Single Ph</b>	5.19	6.06	2.29	2.44	2.59	2.90	1.79	2.46	30.5	24,000	3,080	20,920
<b>20ft GP PW*</b>	5.45	6.06	2.39	2.50	2.26	2.60	2.39	2.22	29.5	30,480	3,100	27,380
<b>20ft GP ISO</b>	5.45	6.06	2.29	2.44	2.28	2.60	2.29	2.26	28.4	30,480	2,800	27,680
<b>20ft HC** Event</b>	5.34	6.06	2.29	2.44	2.59	2.90	1.79	2.46	31.6	24,000	3,060	20,940
<b>20ft HC** ISO</b>	5.46	6.06	2.32	2.44	2.57	2.90	2.33	2.54	32.5	30,480	3,140	27,340
<b>20ft HC** PW*</b>	5.45	6.06	2.39	2.50	2.57	2.90	2.39	2.53	33.5	30,480	3,260	27,220
<b>40ft HC** ISO</b>	11.6	12.2	2.29	2.44	2.57	2.90	2.29	2.54	57.8	30,480	4,660	25,820

Refrigerated containers can differ depending on your intended usage, be sure to contact our sales team for more information. Dimensions are metric and sizes are approximate.

Temperature Ranges - Single phase chillers (0°C to 20°C) - Three phase chillers (-25°C to 20°C). Single-phase units require 15Amps / 240Volt, three-phase units require 32Amps / 415Volt.

\*PW - Pallet Wide. Allows two Australian standard pallets to be stored side by side.

\*\*HC - High Cube Container.

# LOOKING FOR STORAGE SOLUTIONS? CHECK OUT THE PRODUCT RANGE.

In support of our policy of continuous product development we reserve the right to change materials and specification without notice. Drawings, where shown may not be to scale. Dimensions are metric and size are approximate. Where possible specification sheets are made available on our website. All containers and products should be installed and used in accordance with manufacturer's instruction provided. Warning: products may be subject of registered designs and patents. Refer to our website for terms and conditions. Every effort has been made to ensure accuracy of content. However, no liability will be met by Royal Wolf or its suppliers for any errors or omissions. Product data and information is not binding. All brands and logos are registered trademarks and are subject to copyright laws. No part of this document may be reproduced without the consent of Royal Wolf.

